

# SHREE RAM PIPE

ERW PIPES - ROUND PIPES - SQUARE PIPES, ANGLES, FLATS, CHANNELS & I-BEAMS



ROUND PIPES

SQUARE PIPES

RECTANGLE PIPES

STRUCTURAL STEEL

- Square Hollow pipe

15x15 to 150x150

200x200,300x300

1.6 to 6mm thickness

- Rectangle Hollow Pipe

40x20 to 96x48

Thickness up to 5 mm

122x61

145x82

172x92

200x100

300x150

Thickness 3mm to 6mm

- Round pipe

1/2" to 6"

Thickness up to 5 mm

10" , 12" , 16"

Thickness up to 8 mm

## Applications

• Scaffolding & Structural Purposes	• Agriculture & Irrigation	• Construction Industries / Architecture
• FireFighting System	• Electric Poles & Installations	• Steel Tubes for belt conveyor and Idlers
• Telecom Towers	• HVAC	• Other Fabrication Work

BRANDS WE DEAL IN

Hi-TECH  
PIPES

APLAPOLLO  
STEEL PIPES

GAYATRI ISPAT  
MFG. MS PIPE & STRIPS

ASPL

OPP. ATIKA, RAILWAY CROSSING, DHEBAR ROAD (SOUTH), RAJKOT.

96877 57017 | 80000 88909 | 98258 28427

# SWASTIK GROUP

SWASTIK  
ALLOYS

SHREE  
RAM STEEL

SHREE  
RAM PIPE



Making you happy with the

**Best quality**

ALLOY STEEL - BRIGHT BARS - BLACK BARS - VSPL BILLETS - WIRE RODS - BLOOMS

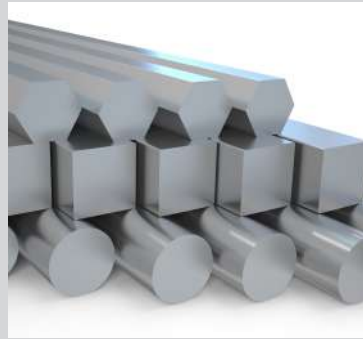
H.R. / HRPO / C.R. / G.P - COILS, SHEETS AND PLATES



ALLOY STEEL



VSPL BILLETS



BLACK & BRIGHT BAR



WIRE RODS



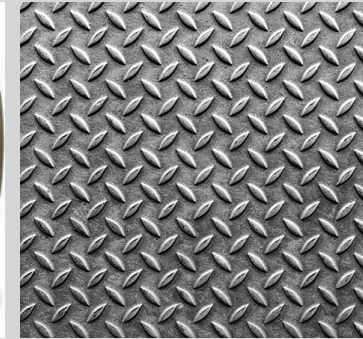
H.R. / HRPO / C.R. COILS



H.R. / C.R. / G.P. PACKETS



CR / GP SLITTING COILS



CHEQUERED PLATES

## About us

- We have been in the steel trading industry for more than 2 decades, which has helped us to have presence in majority industries across saurashtra and northern gujarat.

- We are market leaders in steel trading industry which includes :

Bright Bars   Black Bars   Billets   Wire Rods   Blooms

- We are authorised distributor of :

VSPL(RINL)   ARJAS STEEL   ARORA STEEL   JSPL

- We deal in several grades which includes carbon steel and majority alloy steel grades which like :

SAE52100   SAE8620   SAE4140   SAE1018   SAE1541   20MnCr5   16MnCr5

EN8D   EN31   EN9   EN19   EN24   EN353   EN1A

41 Cr4   ST52.3   42CrMo4

## SIZE TO WEIGHT CONVERSION CHART

For ROUND Bar:		For SQUARE Bar:		For HEXAGON Bar:	
Diameter (mm)	D	Length of side	D	Length between two parallel sides	D
Length of bar	L	Length of Bar	L	Length of hexagon bar	L
Wgt. of RoundBar	$D \times D \times 0.0019 \times L$	Wgt. of square bar	$D \times D \times 0.0024 \times L$	Wgt. of square bar	$D \times D \times 0.00208 \times L$

- HR, HRPO, HRSPO, CR, GP Coils / Sheets, Plates, Chequered Plates & Slitting Coils in all sizes and customised requirements.

HR		HRPO / HRSPO		Chequered Plates	
Thickness	1.60 mm to 4.00 mm	Thickness	1.60 mm to 4.00 mm	Thickness	2.60 mm to 10 mm

CR		GP	
Thickness	0.40 mm to 3.00 mm	Thickness	0.30 mm to 3.00 mm

- Average Weight of a Sheet / Plate :  $Length \times Width \times 7.85 \times Thickness$

## Applications:

• Agriculture	• Automative	• Appliances
• Infrastructure	• Engineering	• Machinery

AUTHORISED DEALER & DISTRIBUTOR



BRANDS WE DEAL IN



📍 GONDAL ROAD, NR. S.T. WORKSHOP, RAJKOT.

☎ 98255 94929 | 99255 49535 | 99097 88097

📍 OPP. ATIKA, RAILWAY CROSSING, DHEBAR ROAD (SOUTH), RAJKOT.

☎ 97264 95939 | 98250 75776